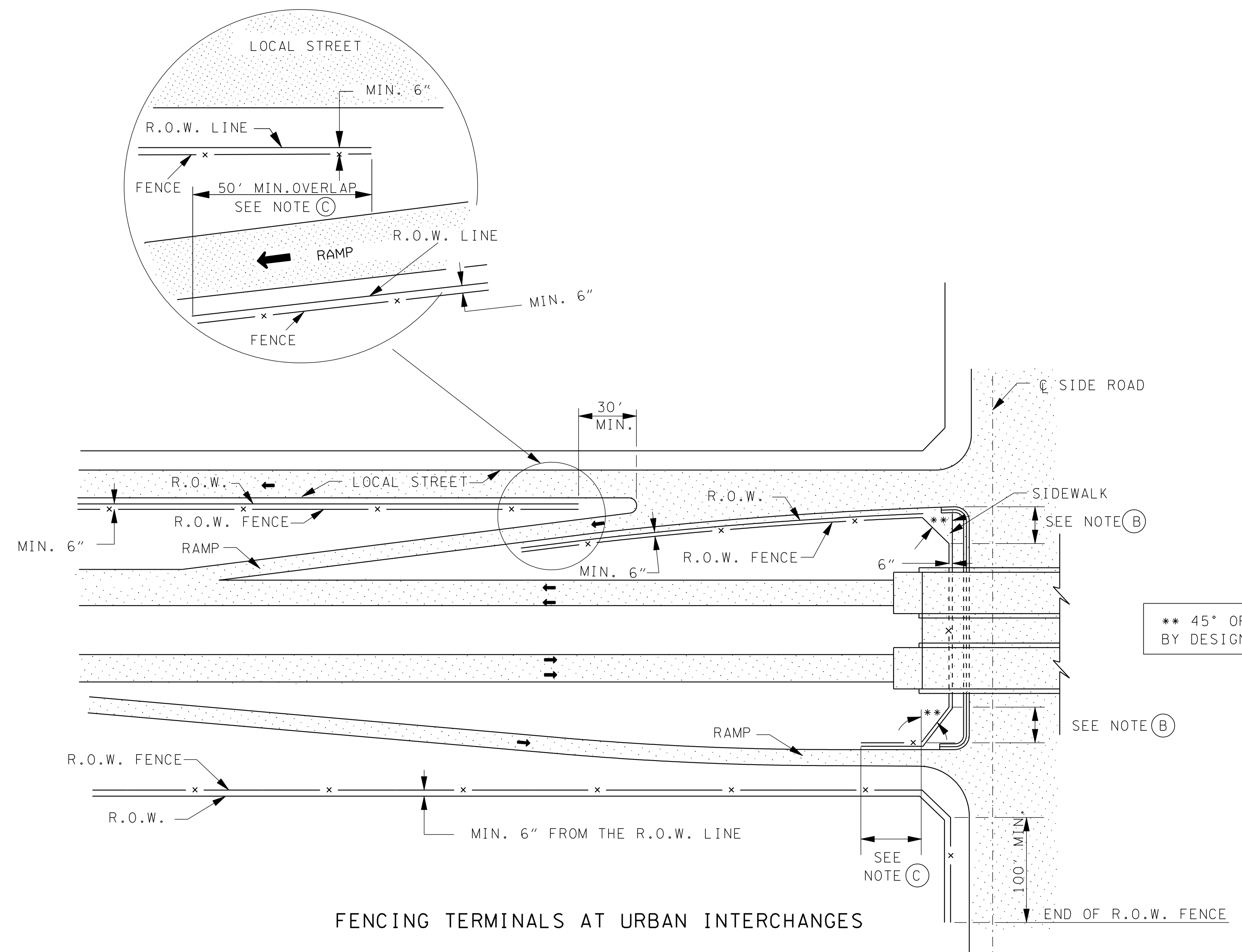


FENCING TERMINALS AT RURAL INTERCHANGES

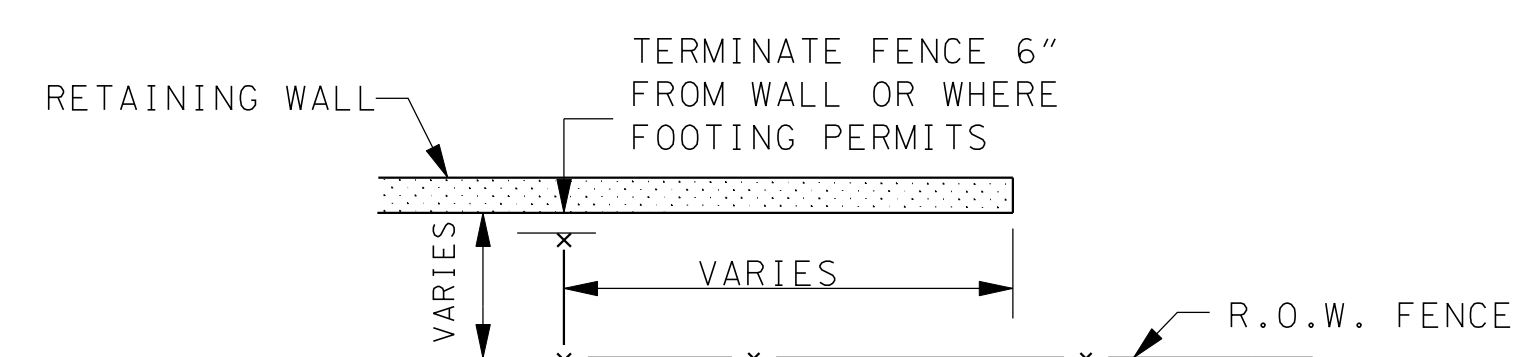
APPLIES TO BRIDGE OVER CROSSROAD AND CROSSROAD OVER INTERSTATE
(BRIDGE OVER CROSSROAD SHOWN)

FENCING TERMINALS AT RURAL INTERCHANGES GENERAL NOTES

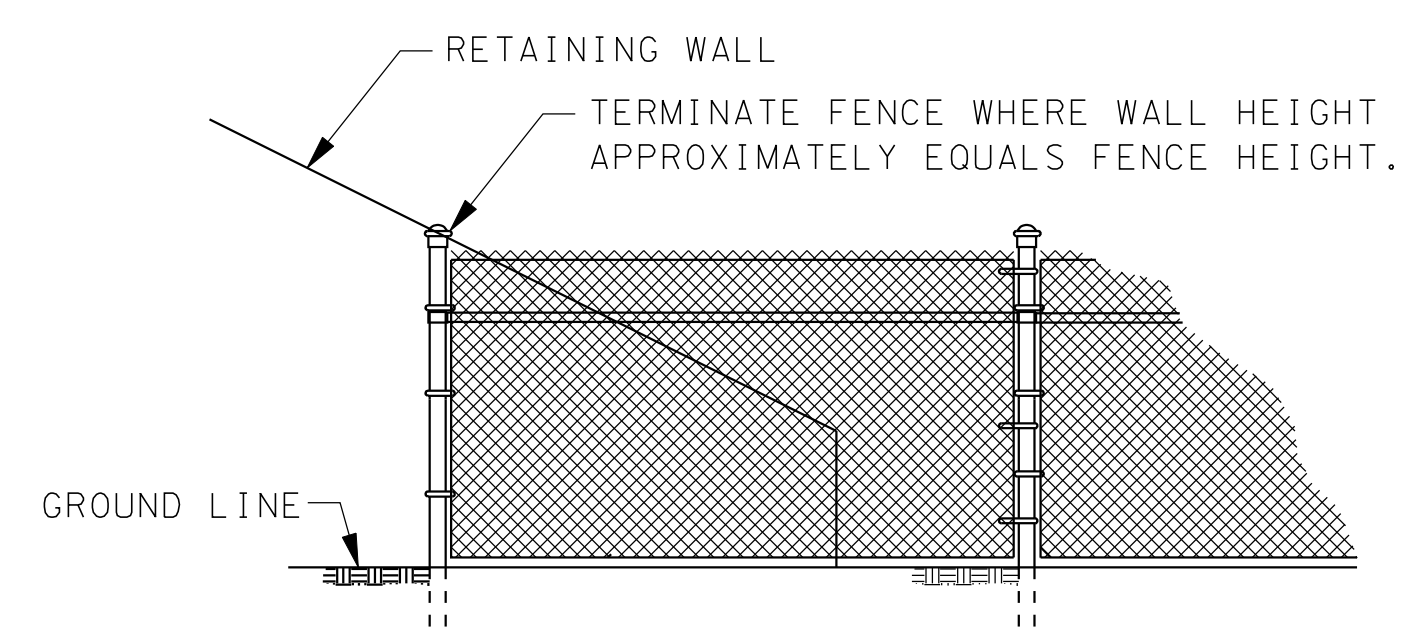
- ① RIGHT-OF-WAY FENCE SHALL CONFORM TO NOTES AND DETAILS SPECIFIED ON STANDARD DRAWING NO. S-F-10B.
- ② RIGHT OF WAY FENCE ALONG THE CROSSROAD WILL EXTEND A MINIMUM 300 FEET BEYOND THE END OF THE ACCELERATION OR DECELERATION TAPER, WITH THE TAPER MOST REMOTE FROM THE PROJECT ESTABLISHING THE END FOR BOTH SIDES OF THE ROADWAY. IN THE ABSENCE OF A TAPER THE RADIUS POINT OF THE RAMP RETURN WILL BE USED WITH THE ABOVE CRITERIA.
- ③ FOR INTERCHANGE QUADRANTS HAVING NO RAMP THE RIGHT OF WAY FENCE WILL EXTEND ALONG THE CROSSROAD TO A POINT OPPOSITE THE LIMIT OF LIMITED ACCESS RIGHT OF WAY ESTABLISHED BY THE RAMP TAPER OR RADIUS POINT AS NOTED ABOVE.



FENCING TERMINALS AT URBAN INTERCHANGES



PLAN



ELEVATION

FENCING TERMINALS AT RETAINING WALLS

FENCING TERMINALS AT URBAN INTERCHANGES GENERAL NOTES

- ① RIGHT-OF-WAY FENCE SHALL CONFORM TO NOTES AND DETAILS SPECIFIED ON STANDARD DRAWING NO. S-F-10 AND S-F-10A.
- ② THE INDICATED DISTANCE SHALL BE SUFFICIENT TO PROVIDE SATISFACTORY SIGHT DISTANCE FOR THE TRAFFIC FROM THE RAMP.
- ③ END SECTIONS OF THE R.O.W. FENCE SECTIONS SHALL BE OVERLAPPED, MIN. 50'.
- ④ R.O.W. FENCE SHALL BE PLACED MIN. 6" FROM THE R.O.W. LINE.

STATE OF TENNESSEE
DEPARTMENT OF TRANSPORTATION

RIGHT-OF-WAY
FENCE LOCATIONS
AT
INTERCHANGES

1-24-08

S-F-10D